

# MIRA VILLAS

DESIGNED BY **BENTLEY HOME**



DISTRICT 11, MBR CITY

Breathtaking views of Dubai's skyline and the serenity of a private lagoon create a perfect balance between urban convenience and natural beauty.



**MIRA VILLAS**

DESIGNED BY BENTLEY HOME

## FACTS

- 36 fully furnished villas
- D11 district, Meydan, Dubai
- Crystal lagoon
- Bespoke gym
- Club House with F&B services





## EXCLUSIVE SERVICES

- 24/7 Concierge
- 24/7 Security surveillance
- 24/7 Valet parking
- Housekeeping services
- Laundry services
- In-residence babysitting
- Grocery delivery
- Residence event catering
- Food Delivery

27 5-BEDROOM WATERFRONT VILLAS  
7,212 square feet each

9 EXCLUSIVE 5-BEDROOM WATERFRONT MANSIONS  
15,000 square feet each



BENTLEY HOME

The Bentley Home collection translates silhouettes and shapes synonymous with the British automotive legend into a language of impeccable Italian furniture.



**BENTLEY**

HOME



## THREE FACES OF LUXURY

Each unit in Mira Villas designed by Bentley Home comes in one of three interior styles catering to your personal preferences.

TRADITIONAL



FORMAL



CONTEMPORARY



# 5 BED VILLA

7,212 square feet

4 main bedrooms on the first floor

1 guest bedroom on the ground floor

Lagoon view



5 BED VILLA  
TRADITIONAL



# 5 BED VILLA FORMAL



5 BED VILLA  
CONTEMPORARY



# 5 BED MANSION

15,000 square feet

4 main bedrooms on the first floor

1 guest bedroom on the ground floor

Lagoon view



5 BED MANSION  
TRADITIONAL



# 5 BED MANSION FORMAL



5 BED MANSION  
CONTEMPORARY



5 BED MANSION  
PRIVATE GYM



5 BED MANSION  
PRIVATE CINEMA





## PRIVATE LAGOON

Every single unit enjoys a waterfront location and lagoon views.



## BESPOKE GYM

The community features a custom-designed gymnasium by Technogym and a dedicated club house offering F&B services and a relaxed ambience.

A modern outdoor terrace featuring a swimming pool, lounge chairs, and tropical plants. The terrace is covered by a wooden pergola with slats. The pool is rectangular and filled with clear blue water. The lounge chairs are white with brown cushions. The plants include palm trees and large green leaves. The overall atmosphere is bright and sunny.

## SPACIOUS TERRACES

Enjoy sunbathing in the comfort of your home with private terraces.

READY TO MOVE IN

All units are handed over featuring household appliances by renowned brands.

Dishes by Bernardaud

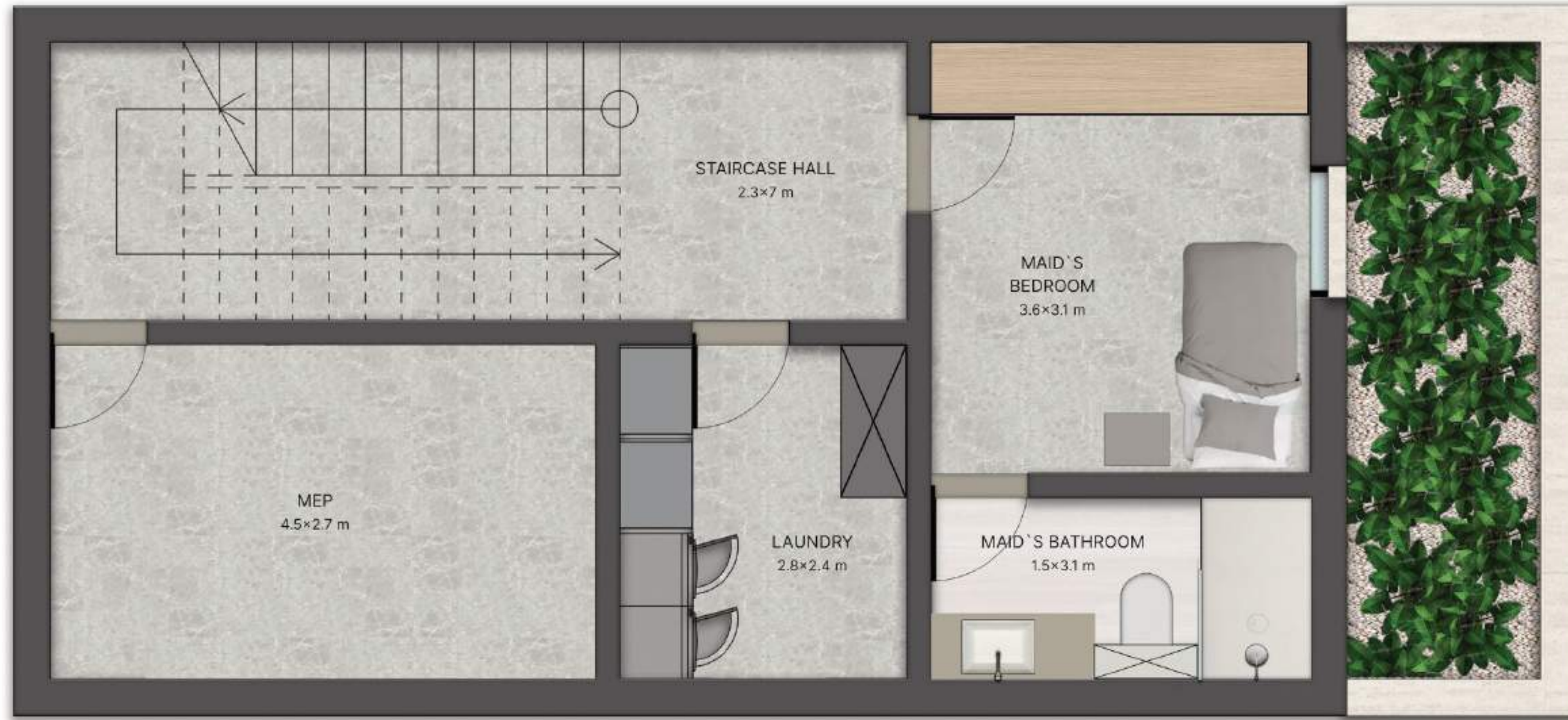
Flatware by Christofle

Home lighting by Lalique

Bed linen by Frette

Kitchen appliances by Gaggenau





LOWER GROUND FLOOR

FLOOR PLANS

5 BED VILLA

TRADITIONAL

670 SQ M / 7 212 SQ FT



GROUND FLOOR

FLOOR PLANS

5 BED VILLA

TRADITIONAL

670 SQ M / 7 212 SQ FT



FIRST FLOOR

FLOOR PLANS

5 BED VILLA

TRADITIONAL

670 SQ M / 7 212 SQ FT



SECOND FLOOR



LOWER GROUND FLOOR

FLOOR PLANS

5 BED VILLA

FORMAL

670 SQ M / 7 212 SQ FT



GROUND FLOOR

FLOOR PLANS

5 BED VILLA

FORMAL

670 SQ M / 7 212 SQ FT



FIRST FLOOR

FLOOR PLANS

5 BED VILLA

FORMAL

670 SQ M / 7 212 SQ FT



SECOND FLOOR



LOWER GROUND FLOOR

FLOOR PLANS

5 BED VILLA

CONTEMPORARY

670 SQ M / 7 212 SQ FT



GROUND FLOOR

FLOOR PLANS

5 BED VILLA

CONTEMPORARY

670 SQ M / 7 212 SQ FT



FIRST FLOOR

FLOOR PLANS

5 BED VILLA

CONTEMPORARY

670 SQ M / 7 212 SQ FT



SECOND FLOOR



LOWER GROUND FLOOR

FLOOR PLANS

5 BED MANSION

TRADITIONAL

1400 SQ M / 15 000 SQ FT



GROUND FLOOR

FLOOR PLANS

5 BED MANSION

TRADITIONAL

1400 SQ M / 15 000 SQ FT



FIRST FLOOR

FLOOR PLANS

5 BED MANSION

TRADITIONAL

1400 SQ M / 15 000 SQ FT



SECOND FLOOR



LOWER GROUND FLOOR



GROUND FLOOR

FLOOR PLANS

5 BED MANSION

FORMAL

1400 SQ M / 15 000 SQ FT



FIRST FLOOR

FLOOR PLANS

5 BED MANSION

FORMAL

1400 SQ M / 15 000 SQ FT



SECOND FLOOR

FLOOR PLANS

5 BED MANSION

CONTEMPORARY

1400 SQ M / 15 000 SQ FT



LOWER GROUND FLOOR

FLOOR PLANS

5 BED MANSION

CONTEMPORARY

1400 SQ M / 15 000 SQ FT



GROUND FLOOR

FLOOR PLANS

5 BED MANSION

CONTEMPORARY

1400 SQ M / 15 000 SQ FT



FIRST FLOOR



SECOND FLOOR